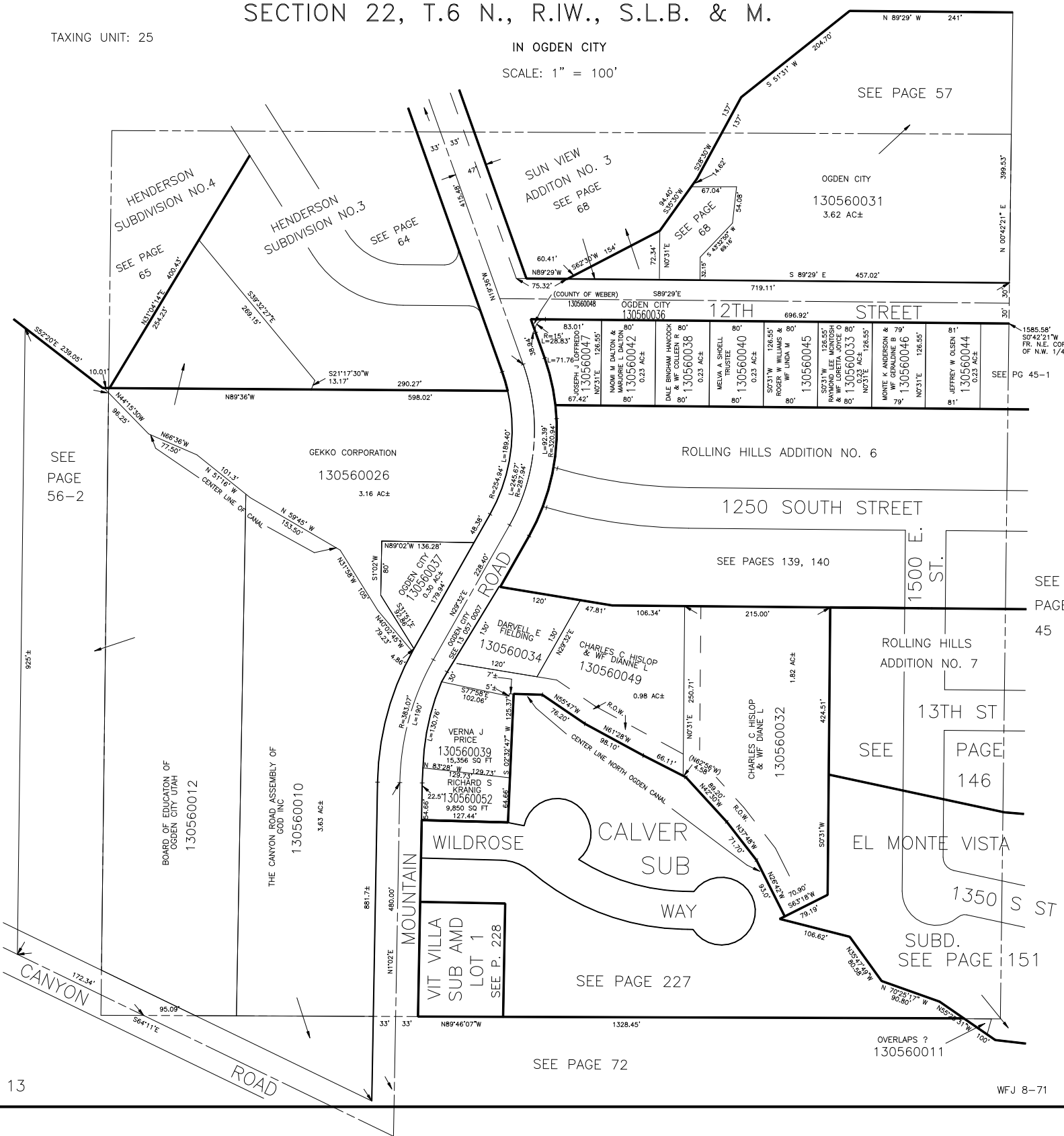


S.E. 1/4 OF N.W. 1/4
SECTION 22, T.6 N., R.1W., S.L.B. & M.

TAXING UNIT: 25

IN OGDEN CITY
SCALE: 1" = 100'



SEE PAGE 56-2

SEE PAGE 57

SEE PAGE 64

SUN VIEW ADDITION NO. 3
SEE PAGE 68

SEE PAGE 68

OGDEN CITY
130560031
3.62 AC±

1585.58'
50°42'21"W
FR. N.E. COR.
OF N.W. 1/4
SEE PG 45-1

ROLLING HILLS ADDITION NO. 6

1250 SOUTH STREET

SEE PAGES 139, 140

SEE PAGE 45

ROLLING HILLS ADDITION NO. 7

13TH ST

SEE PAGE 146

EL MONTE VISTA

1350 S ST

SUBD.
SEE PAGE 151

SEE PAGE 227

SEE PAGE 72

OVERLAPS?
130560011